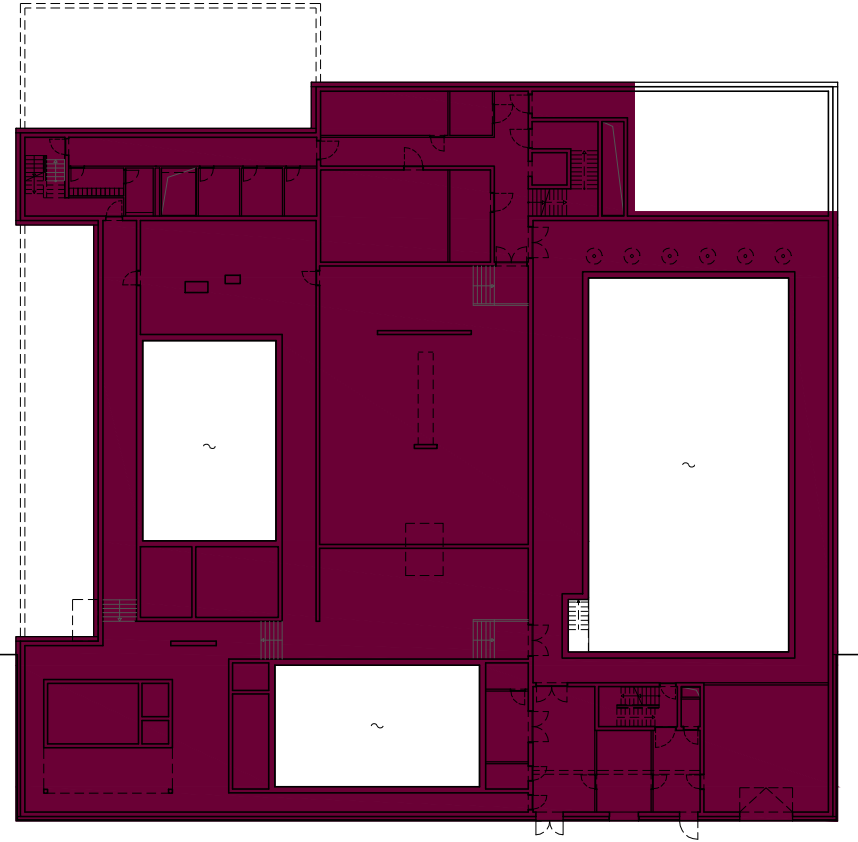


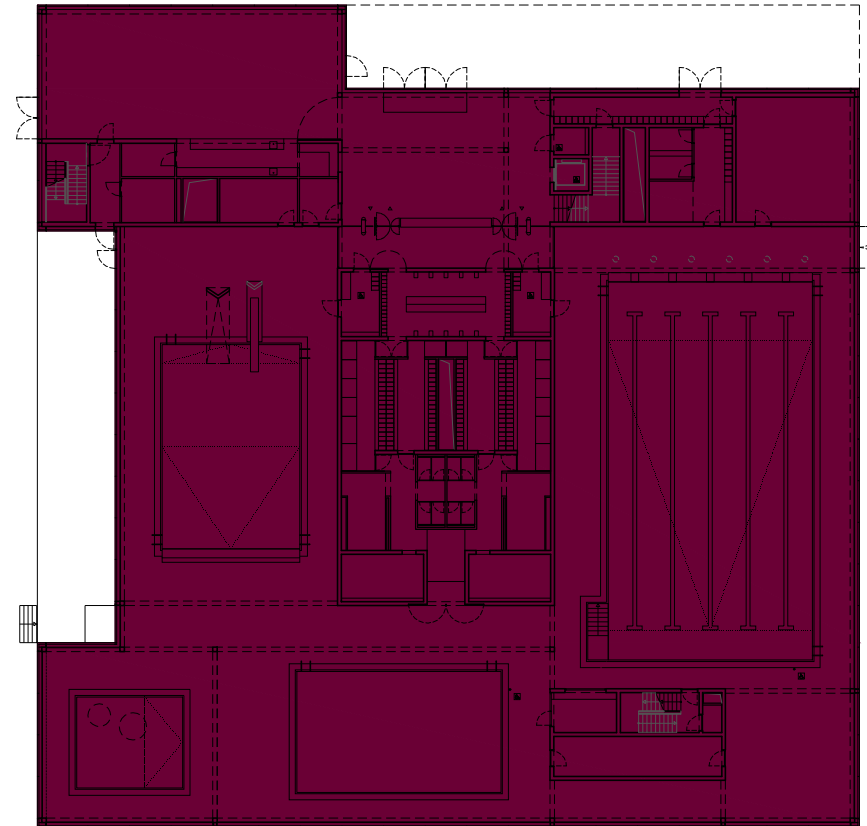
Surface de plancher (SBP):

sous-sol: 1'782 m²
rez-de-chaussée : 2'627 m²
1er étage: 1'946 m²

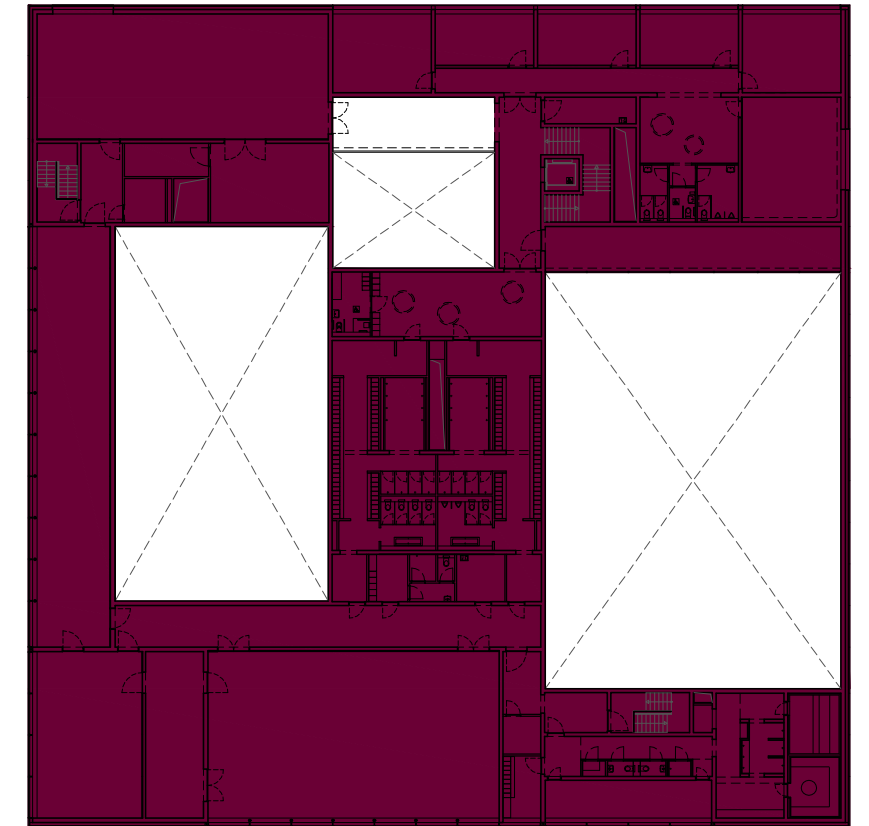
Total SBP : 6'355 m²



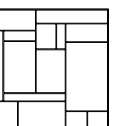
sous-sol
SBP = 1'782 m²



rez-de-chaussée
SBP = 2'627 m²

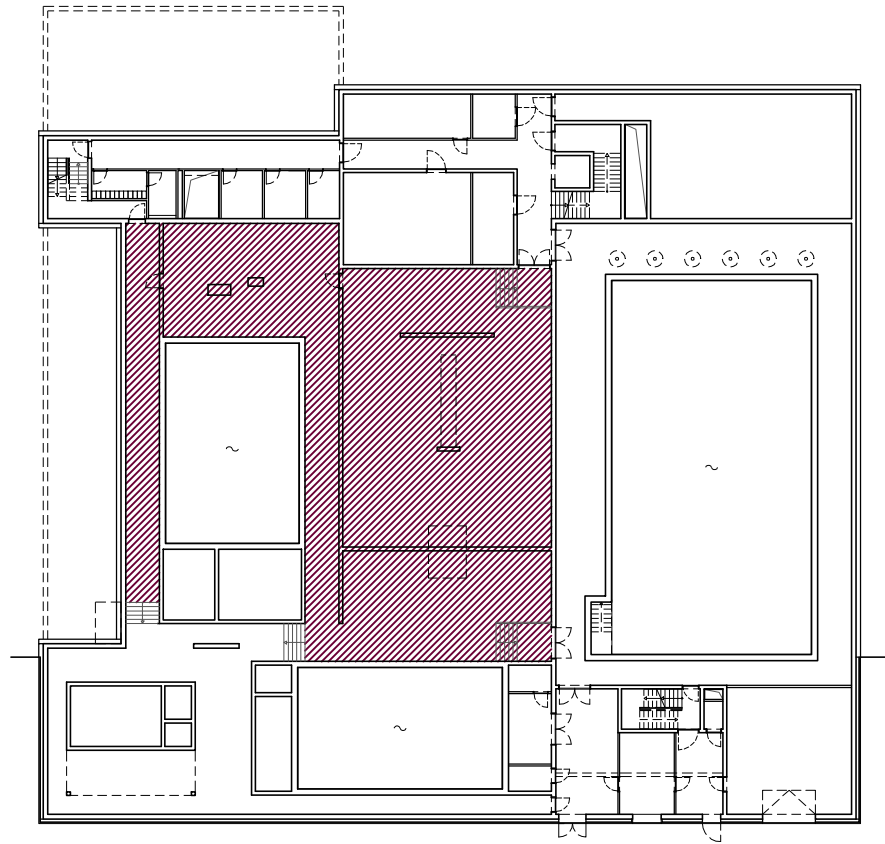


1er étage
SBP = 1'946 m²

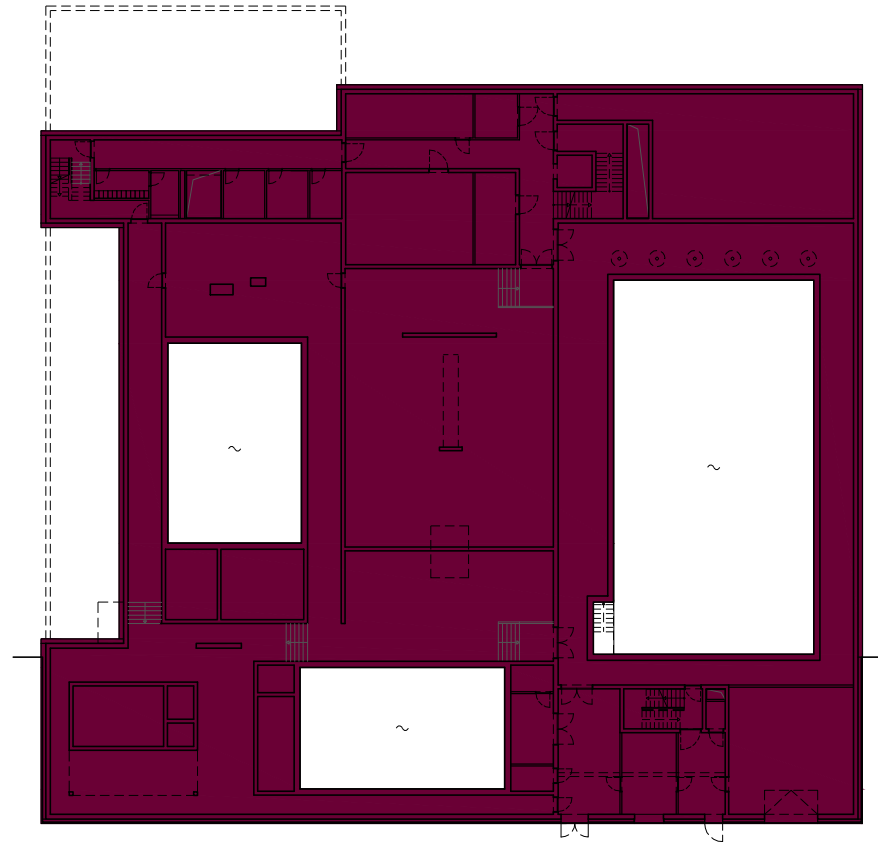


Volume bâti (VB):

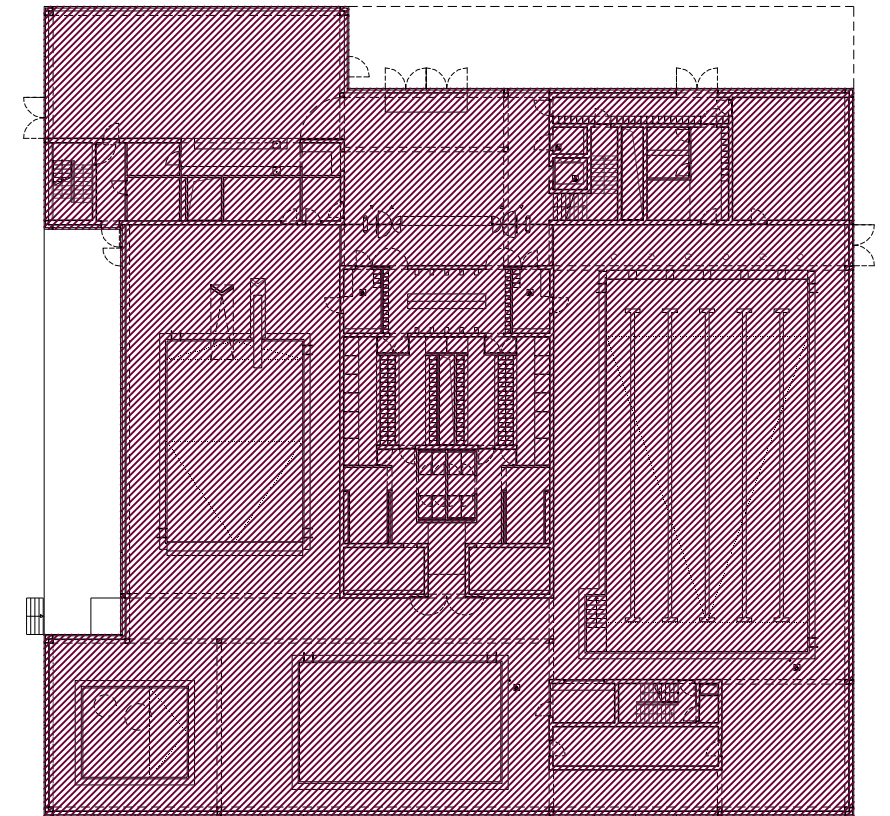
sur-profondeur	558 m3
sous-sol	8'976 m3
rez-de-chaussée	11'164 m3
1er étage	6'947 m3
toiture	836 m3
foyer	348 m3
natation	2'346 m3
plongeon	1'452 m3
Total VB:	32'627 m3



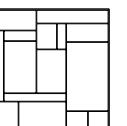
sur-profondeur
VB : 558 m2 x 1.00m = 558 m3

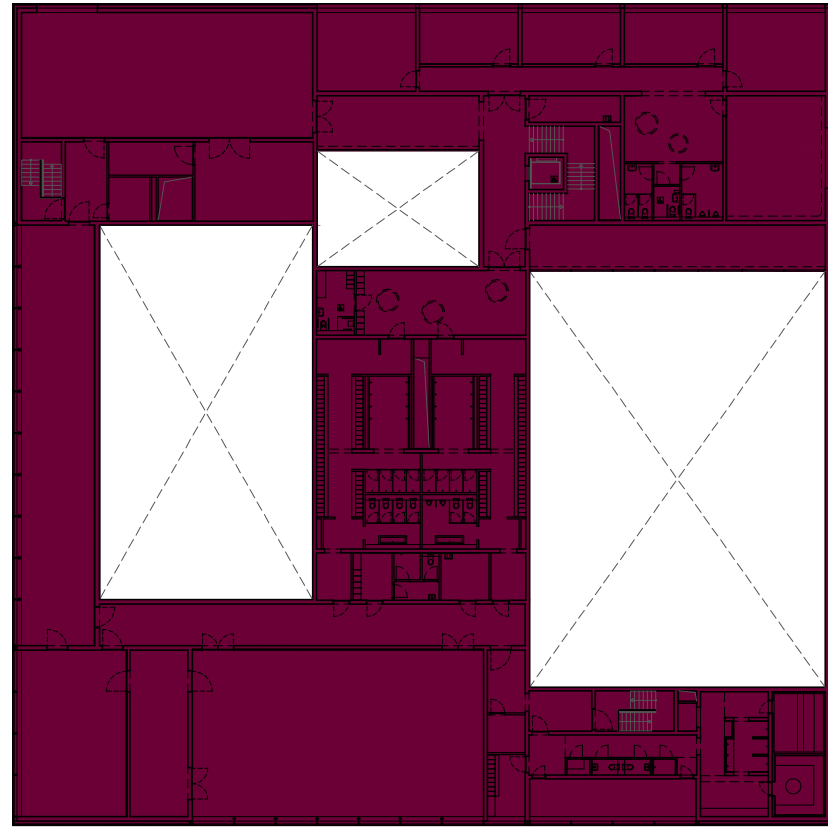


sous-sol
VB sous-sol: 1'897 m2 x 3.9m = 7'398 m3
VB bassin de natation : 58 m2 x 13.5 = 783 m3
VB bassin d'apprentissage : 38 x 8.0 = 304 m3
VB bassin de plongeon : : 54 m2 x 9.1 = 491 m3
Total : = 8'976 m3

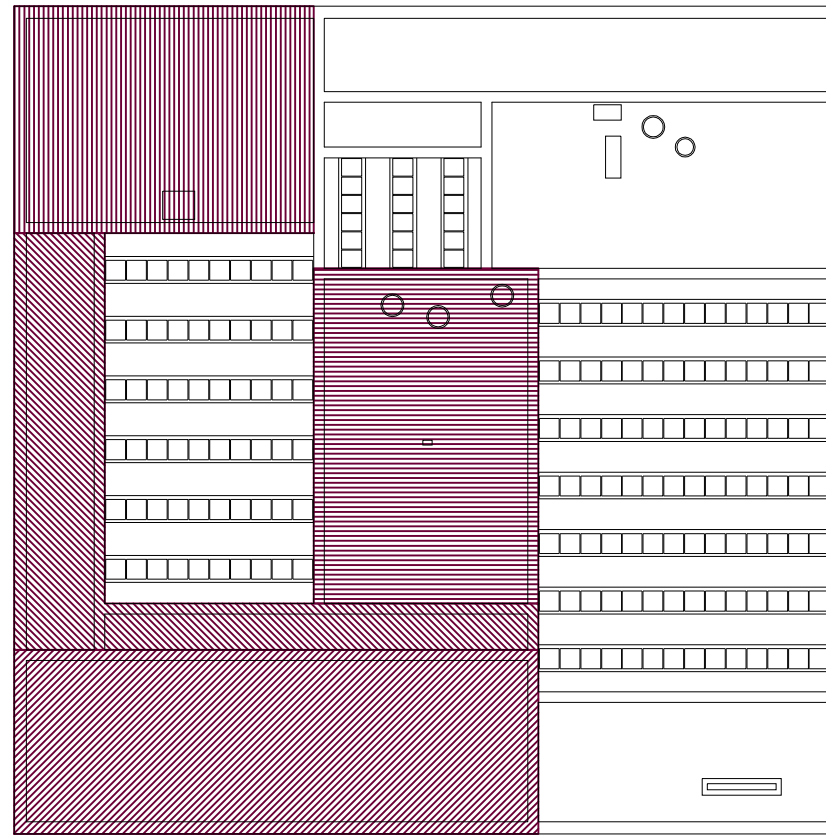


rez-de-chaussée
VB : 2'627 m2 x 4.25m = 11'164 m3

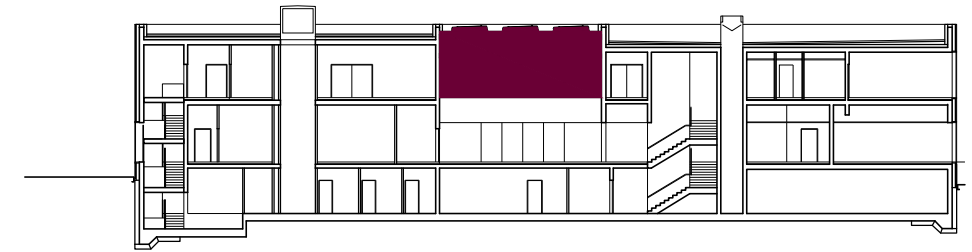




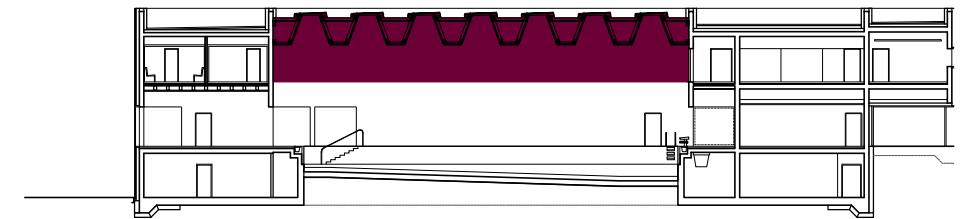
1er étage
 VB : 1'985 m² x 3.50m
 = 6'947 m³



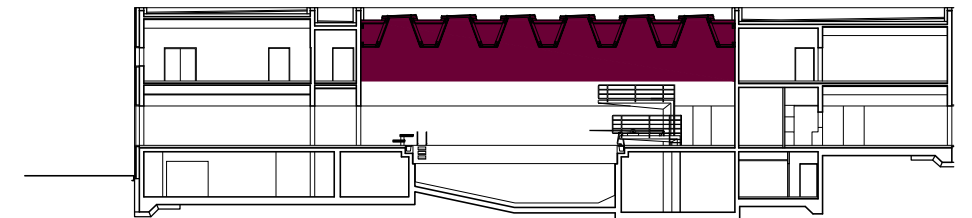
toiture
 VB rythmique : 416 m² x 0.9 m = 374 m³
 VB fitness : 249 m² x 0.1 m = 25 m³
 VB conservatoire : 293 m² x 0.5 m = 146 m³
 VB vestiaires : 324 m² x 0.9 m = 291 m³
 VB total = 836 m³



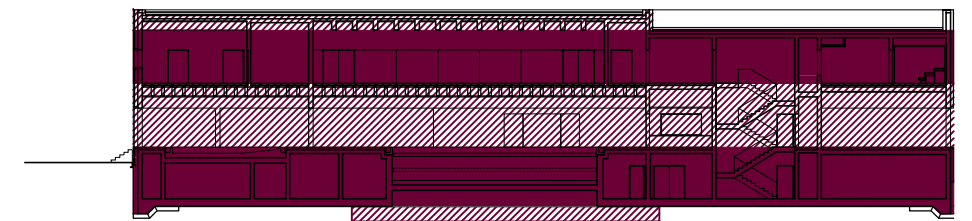
Foyer
 VB 48 m² x 7.25 = 348 m³



Natation
 VB 120 m² x 19.55 = 2'346 m³



Plongeon
 Volume bâti: 103 m² x 14.10 = 1'452 m³



coupe

