

PERFORMANCE



SICHH IN 2020

1 on 4 opportunities has become a project

+14% of new opportunities for a total of **65 opportunities**

Approximately **CHF 2 mio** of ongoing offers or signed projects for 2021

+133% increase of Innosuisse projects for a total of 14 submitted projects

3 publications - including 1 related to Swiss Smart Diagnostics and a capacity of 1.5 publication per person

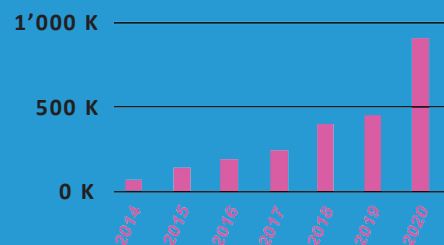
INNOUISSE & INNOCHÈQUE

CHF 130'000 of income confirmed for 2021

CHF 920'000 of estimated income for submitted projects in 2021

Launch of **BrainFit4Life** with **80** national affiliates and **15** international ambassadors

SICHH INCOME



INTELLECTUAL PROPERTY ACTIVITIES FOR THE UNIVERSITY OF FRIBOURG

56 research agreements and various contracts with private companies

13 patent filing ongoing projects

SICHH IS A UNIQUE

COMPETENCE CENTER

based in Fribourg, ideally situated between french-speaking and german-speaking Switzerland, focused on diagnostics and precision medicine. SICHH develops custom research solutions for academic researchers and private industries in the fields of medtech, biotech, foodtech and pharma. SICHH makes leading-edge technologies and skills available in four high-tech facilities related to genomics, proteomics, material characterization, human-machine interaction and the analysis of complex data.



OUR MISSION IS TO PROVIDE AN

INNOVATIVE MULTIDISCIPLINARY PLATFORM

of collaboration in the field of health care allowing customers and partners to access cutting edge equipment and the highest standards in research, development, service design and ergonomics. SICHH collaborates with 10 industrial partners, 10 academic partners and 5 supporting organizations, creating a high added value network.

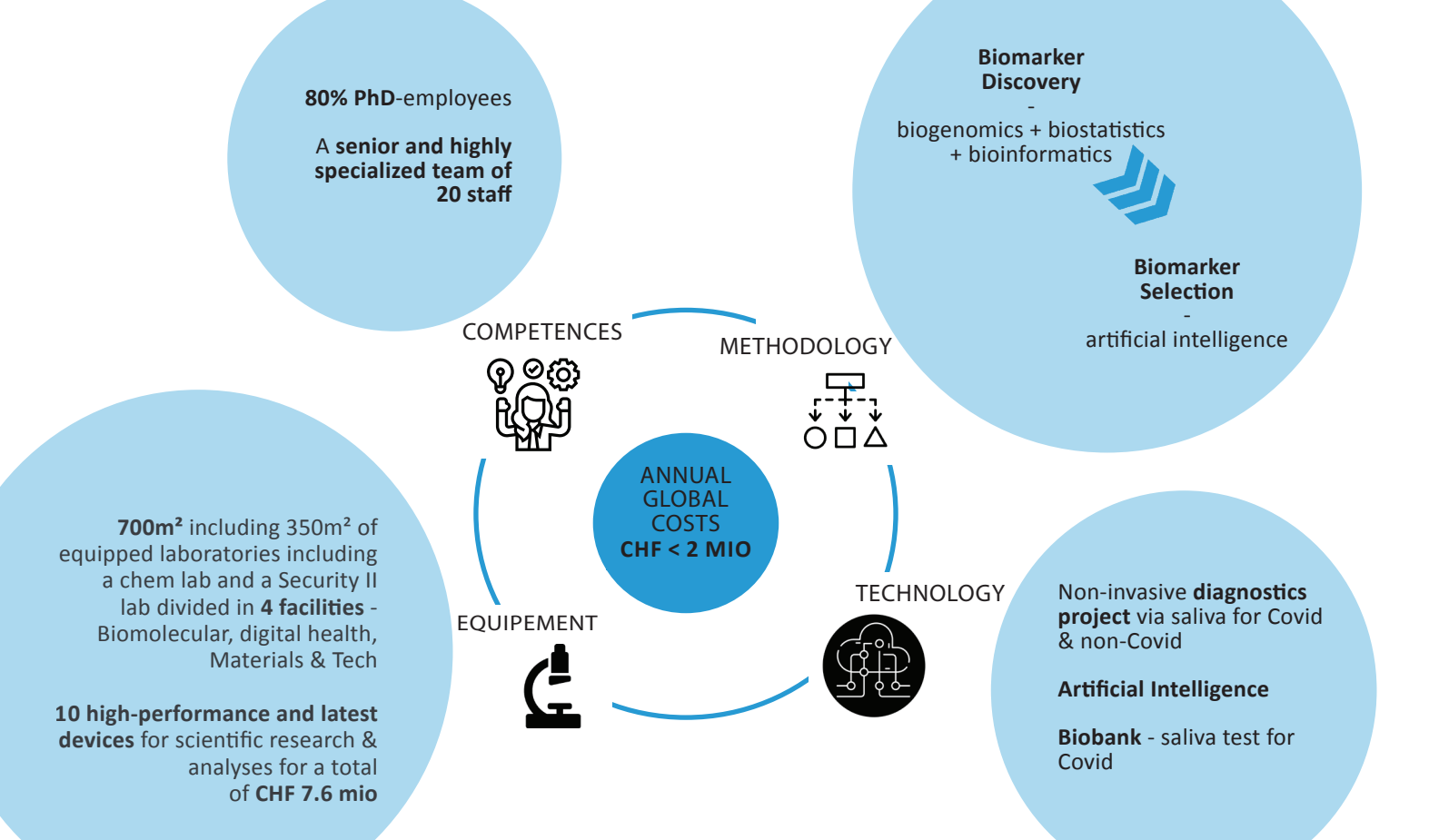


INDUSTRIAL DIVISION

SWISS SMART DIAGNOSTICS

With our SSD industrial division, our aim is to increase the impact of diagnostics and personalized medicine and accelerate development of diagnostic tools in Switzerland.

- > **3 years** of fundamental research in non-invasive diagnostics - saliva tests for Alzheimer
- > **50 companies** contacted for Swiss Smart Diagnostics collaborations
- > **14 companies** and **15 politicians** signed our white paper
- > **9'000 COVID-19** diagnostic tests realized and up to 360 tests per day



EQUIPMENT

MATERIALS FACILITY

- Scanning Transmission Electron Microscope
- Confocal Microscope
- Wide-field Confocal Microscope
- Atome Force Microscope
- Morphologically-directed Raman Spectroscopy

DIGITAL HEALTH FACILITY

- IT Infrastructure for Scientific Computing
- Wearable Sensors
- Video Camcorders & Audio Devices
- Data Banking
- Powerful Supercomputer

BIOMOLECULAR FACILITY

- High-resolution Mass Spectrometer
- 2 Sequencers MiSeq & NextSeq
- Droplet Digital PCR
- RT-PCR
- Automated Plate-Reader
- Capillary Electrophoresis Genetic Analyser
- 2 Liquid Handling Robots

TECH FACILITY

- Security level II Laboratory - P2
- Chemical Laboratory
- Biobank - Nitrogen Tanks and -80°C Freezers

WANT TO KNOW MORE ?

CONTACT DETAILS

Jean-Marc Brunner
CEO
jean-marc.brunner@sichh.ch
+41 76 376 66 25

SICHH
Passage du Cardinal 13B
1700 Fribourg
Switzerland